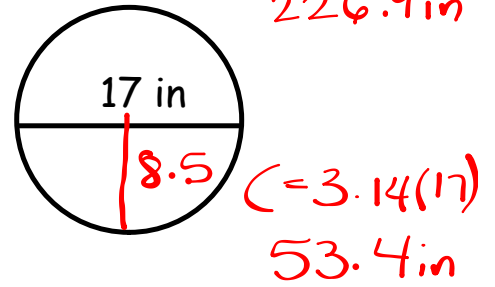
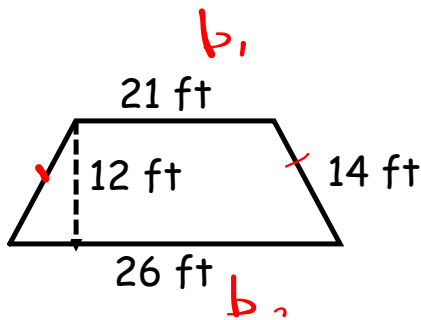
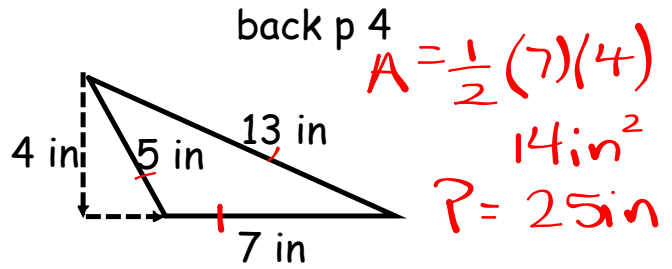
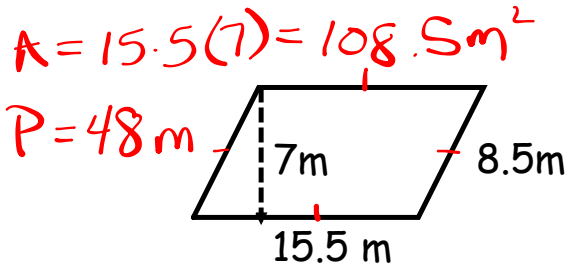
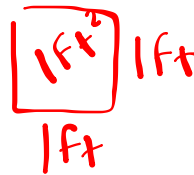


Find the area and Perimeter of each figure.



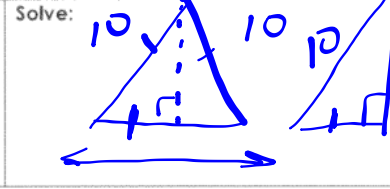
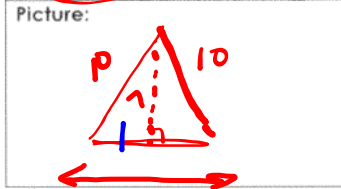
$A = \frac{1}{2}(12)(26 + 21)$
 $\frac{1}{2}(12)(47)$
 $6(47)$
 282 ft^2



$P = 75 \text{ ft}$

homework

6. An isosceles triangle has legs that measure 10 feet. If the height of the triangle is 7 feet, find the length of its base.



Solution: 14.2 ft

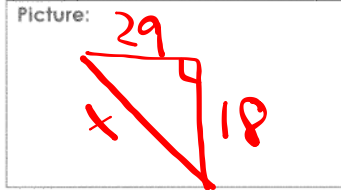
7. A football field is 120 yards long by 53 yards wide. If a player runs diagonally from one corner to the opposite corner, how far will they travel?



Solve:

Solution: 131.2 yd

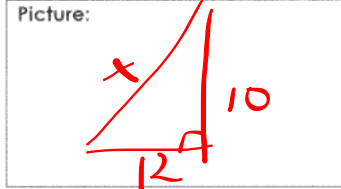
8. On a map, Norristown is 18 miles south of Lincoln, and Lincoln is 29 miles west of Allenport. Find the distance from Norristown to Allenport.



Solve:

Solution: 34.1 mi

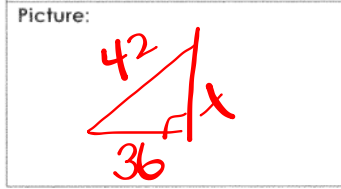
9. A set of stairs is 10 feet tall and covers a horizontal distance of 12 feet. If a handrail is to be installed that extends the entire length of the stairs, what length must it be?



Solve:

Solution: 15.6 ft

10. Cara is flying a kite at the park using a string that is 42 meters long. She notices that the kite is directly above her friend Leah. If Cara and Leah are standing 36 meters apart, how high is the kite?



Solve:

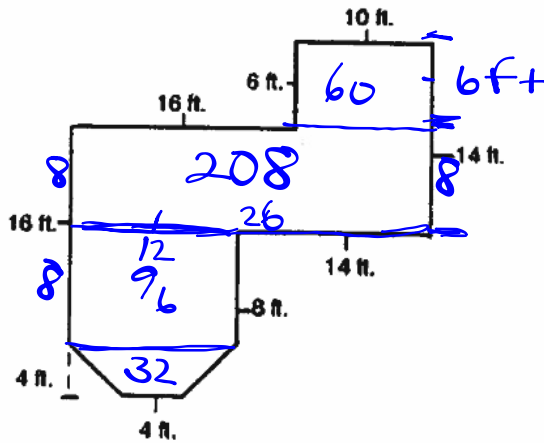
Solution: 21.6 m

$$1, 2, \underline{3}$$
$$a^2 + b^2 = \underline{c^2}$$

$$1 + 4 \neq 9$$

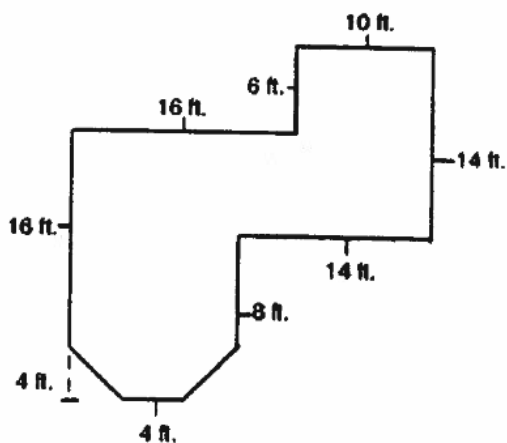
An Architect Needed!

Your Aunt Lucy has decided to re-floor the downstairs of her house and she wants you to help her out. She knows that you have been assuming the role of an architect within your math class and thinks you can handle the job. Below are the dimensions of her downstairs:



An Architect Needed!

Your Aunt Lucy has decided to re-floor the downstairs of her house and she wants you to help her out. She knows that you have been assuming the role of an architect within your math class and thinks you can handle the job. Below are the dimensions of her downstairs:



Quiz

Finish Post Assessment

NE8MY9GU7

Homework - composite figures

IXL 8th Grade Lessons

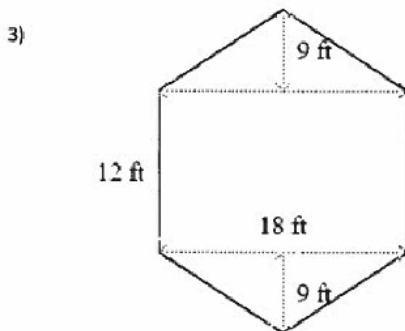
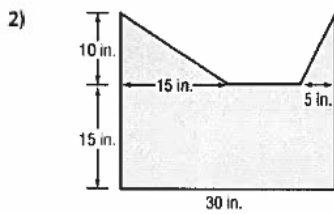
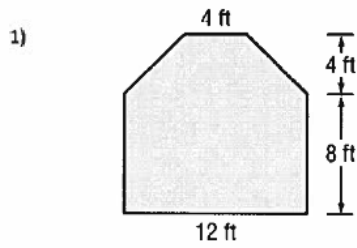
S.2, T.4

Join Prodigy class code 627915

Finding Area and Perimeter of Composite Figures

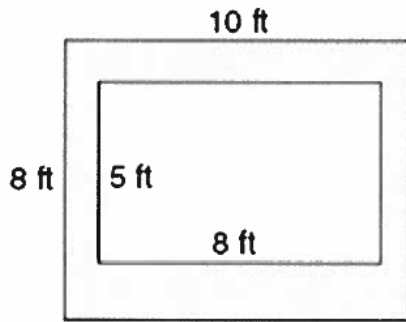
Find the area and perimeter/circumference of each figure below. Be sure to show how you subdivided the shapes and the formulas you used to find your solutions.

homework



Find the area of the shaded region. Be sure to show how you subdivided the shapes and the formulas you used to find your solutions.

4)



5)

